

ReSECT

Registry of the Spanish Society of Thoracic Surgery

New INSIGHTS into your Data

Raúl Embún
ReSECT Scientific Director



32nd ESTS MEETING

26 - 28 MAY 2024 • BARCELONA, SPAIN

“Barcelona 2024 - ESTS, more than a Society!”

Relevant Financial Relationship Disclosure Statement

Title of Presentation/Session:

Registry of the Spanish Society of Thoracic Surgery

Presenter/Chair Name:

Raul Embun

In Compliance with UEMS/EACCME Guidelines,

potential conflicts of interest or support relevant to the above presentation that might cause a bias are declared as follows:

No potential conflicts of interest to report



ReSECT

Transparency

Recognition of
Participation

VALUES

Reliability

Data-Driven
Value

ReSECT Model

Data Science Project ::ReSECT

Future



Ethics

Research Ethics
Committee of Aragón.

Informed consent
for the patient

Non-collection of patient
identifiable data

PI Declaration for the use of
pseudonymised data

ClinicalTrials.gov

[Go to the classic website](#)[Find Studies](#) ▾ [Study Basics](#) ▾ [Submit Studies](#) ▾ [Data and API](#) ▾ [Policy](#) ▾ [About](#) ▾[My Saved Studies \(0\)](#) →Record 1 of 2039 | [Previous Study](#) | [Return to Search](#) | [Next Study](#) →[Home](#) > [Search Results](#) > Study Record**The U.S. government does not review or approve the safety and science of all studies listed on this website.**Read our full [disclaimer](#) for details.

RECRUITING ⓘ

Registry of the Spanish Society of Thoracic Surgery (ReSECT)

ClinicalTrials.gov ID ⓘ NCT05600569

Sponsor ⓘ Sociedad Española de Cirugía Torácica

Information provided by ⓘ Sociedad Española de Cirugía Torácica (Responsible Party)

Last Update Posted ⓘ 2023-10-19



+ Expand all content

- Collapse all content

Study Details

Researcher View

No Results Posted

Record History

Dual
Model

Registry of
Activity

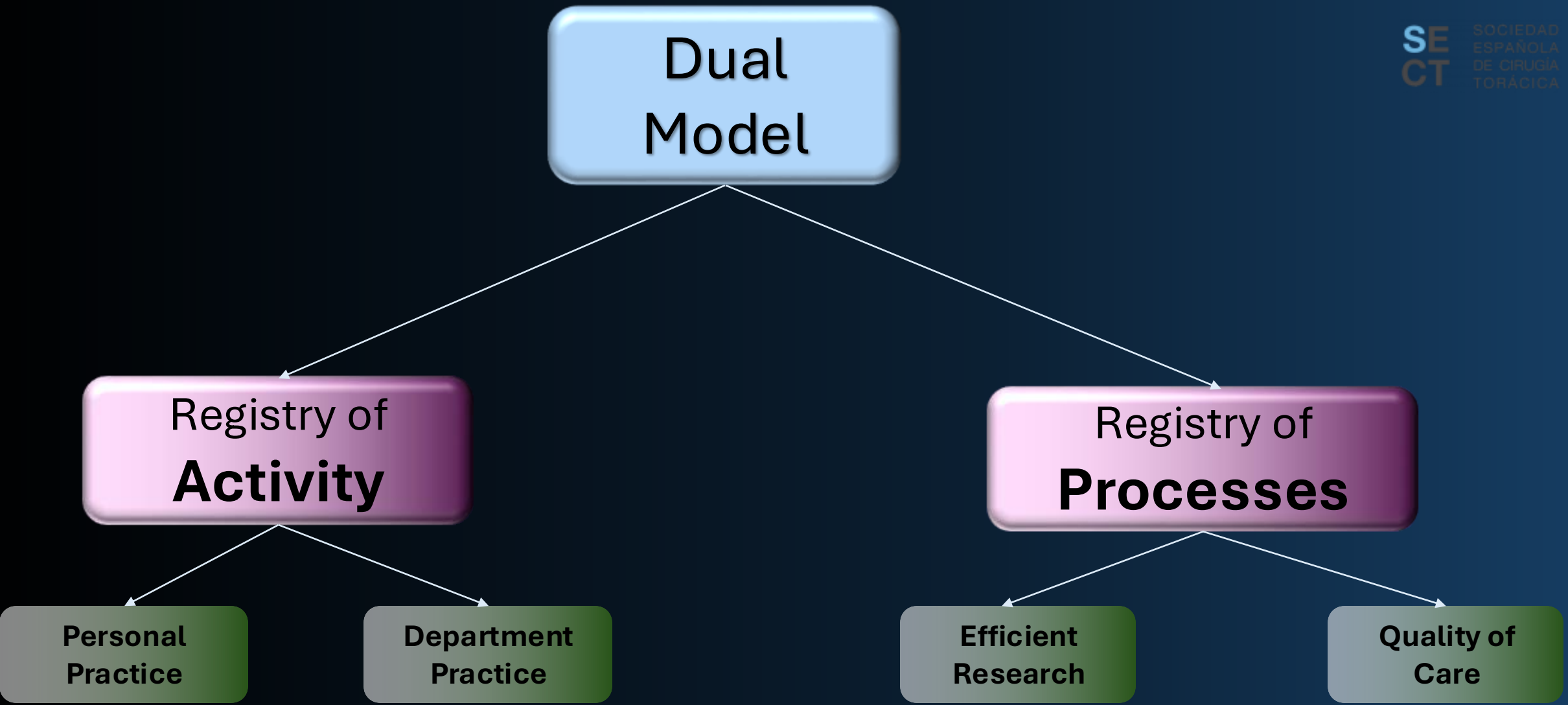
Registry of
Processes

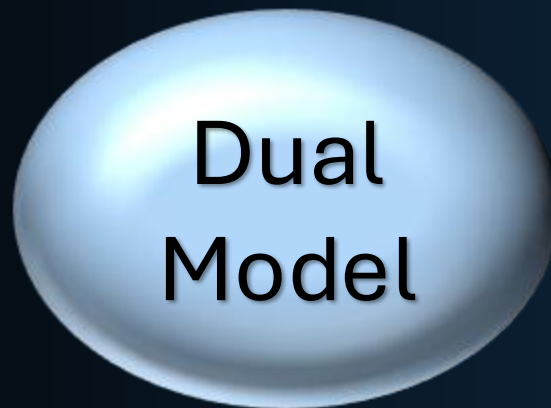
Personal
Practice

Department
Practice

Efficient
Research

Quality of
Care





One Form (15 variables)

Focused on Procedures (not diagnosis)

Pathway to Subsequent Processes

Uncrossed Data (Privacy)

Retrospective and Prospective



5 Forms (300 variables)

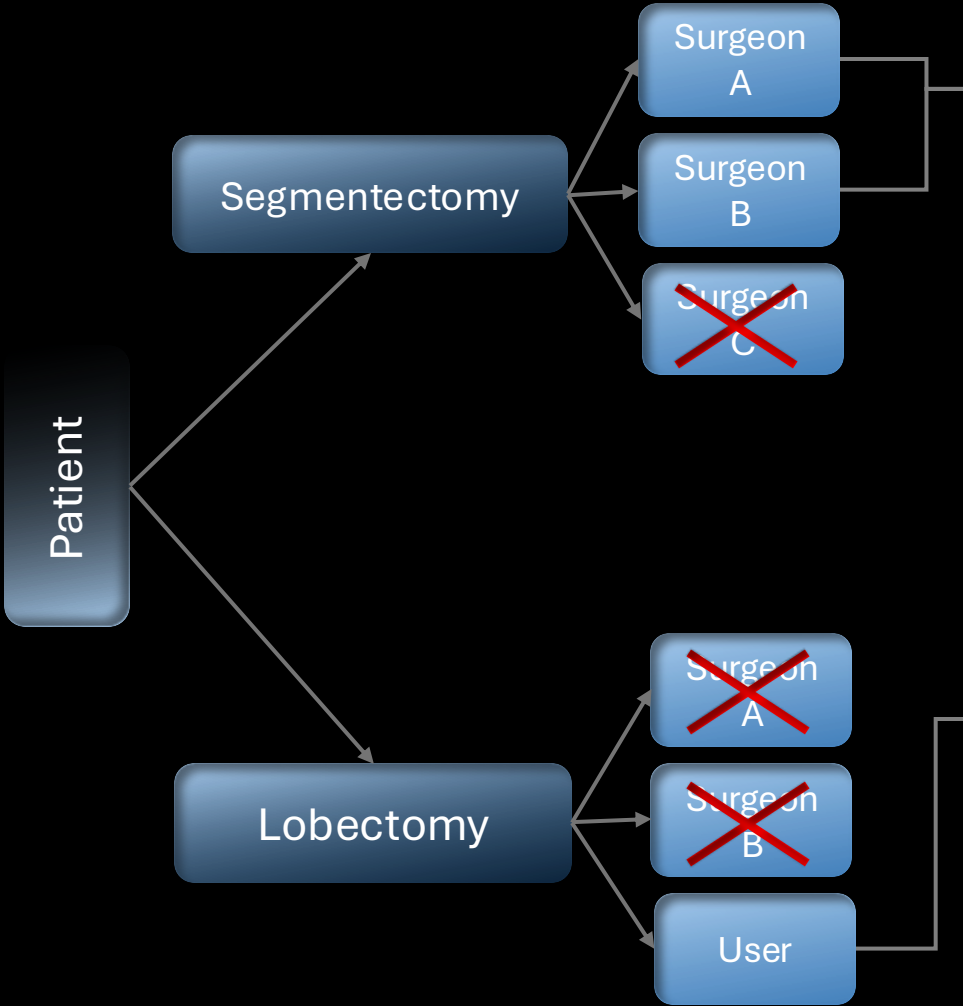
Anatomical Lung Resection

Compatibility with the ESTS Core

Crossed Data (Department)

Prospective (01/01/2023)

Registry Personal Activity

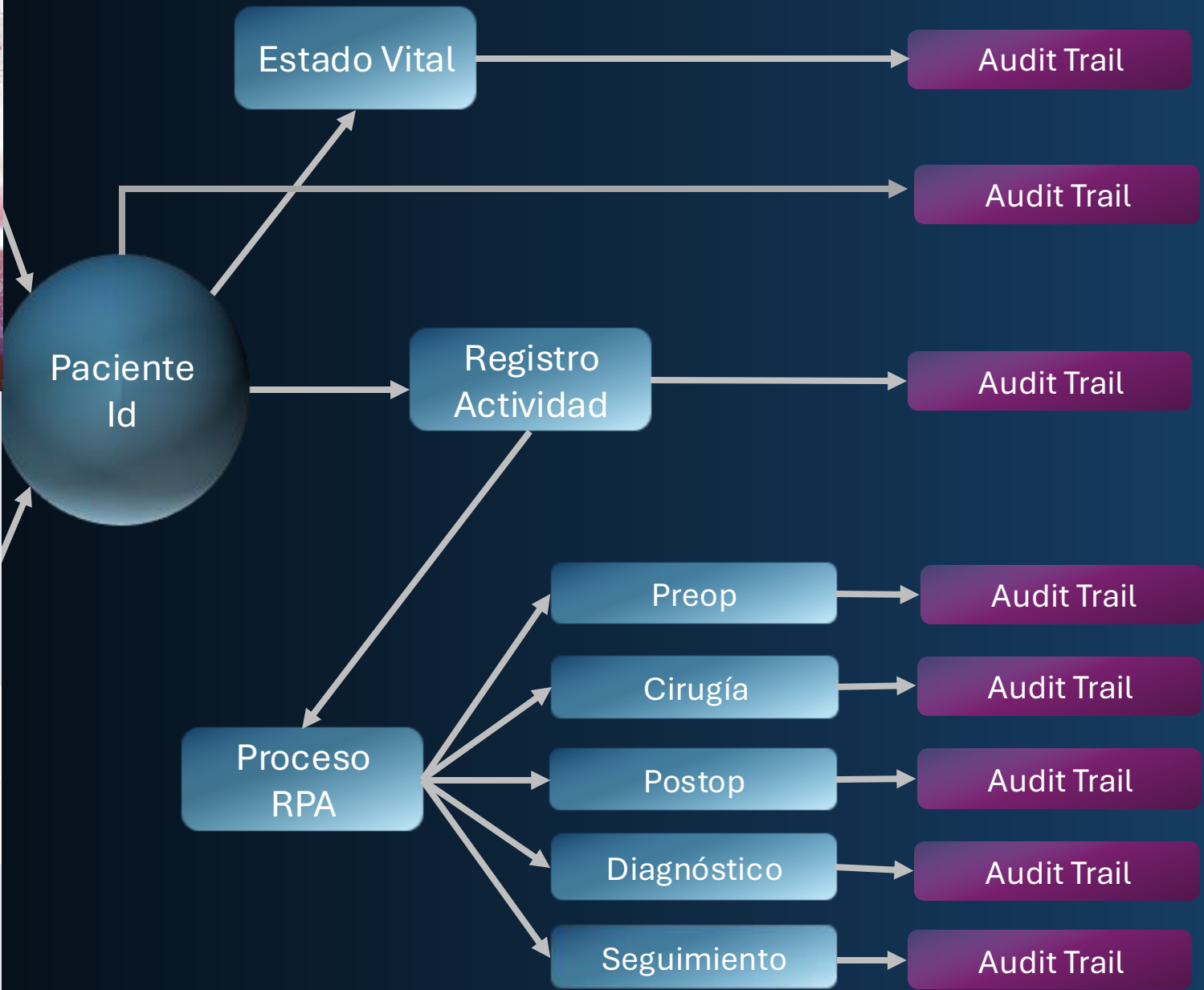


Anatomical Lung Resection Process



Products

By Persei vivarium



ReSECT Model

Data Science Project :: ReSECT

Future

Data Science Project :: ReSECT



<https://resect.netlify.app>

Transparency

Recognition of
Participation

VALUES

Reliability

Data-Driven
Value



The Spanish Society of Thoracic Surgery has published the new call for ReSECT awards in recognition of your participation in our Registry. These awards to the most active professionals and services will be presented at the next SECT congress to be held in Malaga. [link](#)



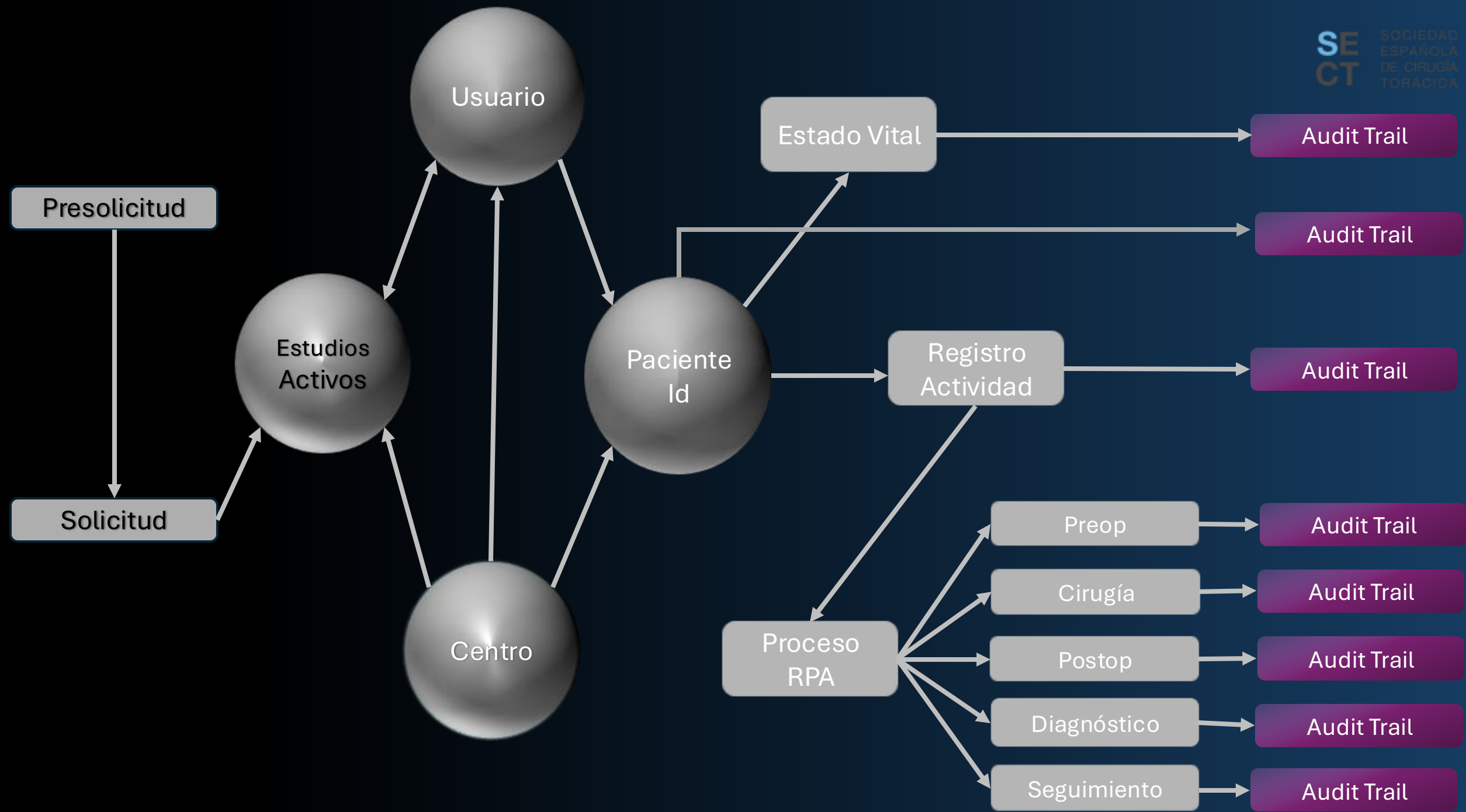
Transparency

Recognition of
Participation

VALUES

Rigour and
Credibility

Data-Driven
Value



Users and Centres

PUBLISHED

Last Updated on 13 May 2024

Contents

[Users by Department](#)[User Profile](#)[Centres](#)[Participation in Figures](#)

This document aims to represent the level of participation in ReSECT, according to the profile of users and healthcare centres involved, taking into account the geographical distribution and main healthcare metrics.

Note

The total number of professionals with a validated ReSECT pre-registration are accounted for this document. Some of these professionals may not have activated their ReSECT user account.

The following figures assume that changes in user's work centre are duly communicated. The professional category of each user is determined by the pre-registration form. Professional category, in the case of residents, is automatically updated to FEA every June if 5 years have passed since the start of their residency.

Users by Department

► Code

Show entries

Search:

HOSPITAL

USERS

Transparency

Recognition of
Participation

VALUES

Reliability

Data-Driven
Value

Projects

Scientific Report

Scientific Report

PUBLISHED

Last Updated on 13 May 2024

Contents

Recruitment

[Cumulative Recruitment](#)[Monthly Patient Recruitment](#)[Monthly Personal-Registry Recruitment](#)[Monthly ALR-Procedures Recruitment](#)

Operative Log

[Anatomical Lung Resection Process](#)

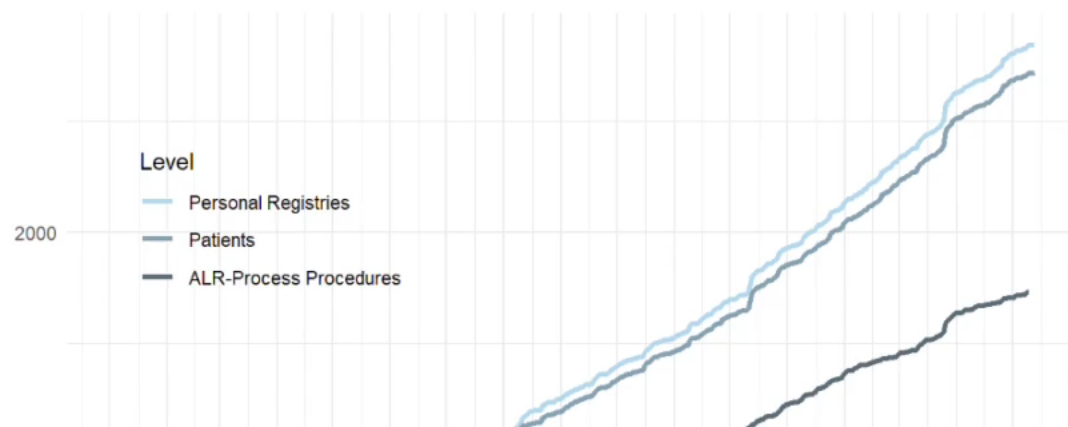
Recruitment

Note

Enrolment figures refer to the **date of creation** of each participation entity (patient, personal registry and ALR procedure) in the data platform.

Cumulative Recruitment

► Code



Transparency

Recognition of
Participation

VALUES

Reliability

**Data-Driven
Value**

Aplicaciones ReSECT



ReSECT Risk

Postop Risk Simulation after lung resection based on the ReSECT nationwide cohort.



ReSECT Benchmarking

Find out how you are performing to continuously improve quality of care.



ReSECT Operative Log

Monitor, Compare and Download your surgical activity.





ReSECT Risk

Postop Risk Simulation after lung resection based on the ReSECT nationwide cohort.



Public App (Real Data)

Process of Anatomical Lung Resection

Non-predictive tool to assist in decision-making

Monitoring Surgical Outcomes (reliability)

¿New tool to generate hypothesis?

2761965939

PUBLISHED

App Data Last Updated on 13 May 2024



ReSECT Risk

Postop Risk Simulation after lung resection based on the ReSECT nationwide cohort.



ReSECT Benchmarking

Find out how you are performing to continuously improve quality of care.



ReSECT Operative Log

Monitor, Compare and Download your surgical activity.





ReSECT Benchmarking

Find out how you are performing to continuously improve quality of care.



ReSECT Users vs Public Demo Versions

Process of Anatomical Lung Resection

Department vs whole ReSECT

Source for Quality Improvement

¿New tool to assist in department accreditation?

2761965939

Log In



Demo Version

Global Filter

Date of Surgery

01/01/2023 to 21/05/2024

Cohort

My Centre: 17 patients
ReSECT: 83 patients

Copy Excel PDF

Show All entries

Search:

Criteria	My Centre	ReSECT
Days on Waiting List (median, IQR)	31 (16-38)	25 (17-34)
Determined of DLCO (%)	88.2	92.8
FEV1 o DLCO preop. < 60 %	6.7	15.6
Exercise Test with or without vO2 (%)	29.4	21.2
VATS-RATS (%)	58.8	73.5
Conversion Rate (%)	16.7	12.9
Clavien-Dindo III-V before discharge(%)	6.7	9
Clavien-Dindo IV-V before discharge (%)	0	1.3
Persistent Airleak (%) *	13.3	13.9
Postop. Length of Stay (median, IQR)	4 (2-5.5)	4 (2.5-7)
Discharge on Weekend Days (%)	33.3	25.3
Re-admissions (%)	11.1	12.3
In-hospital Mortality (%)	0	0
30-day Mortality (%)	0	0





ReSECT Operative Log

Monitor, Compare and
Download your surgical activity.



ReSECT Users vs Public Demo Versions.

Registry of Activity (Individual Level - Operative Log).

Acquisition of skills and responsibilities.

Comparison with other groups of professionals.

¿New tool to assist in individual accreditation?

2761965939

Log In



Username

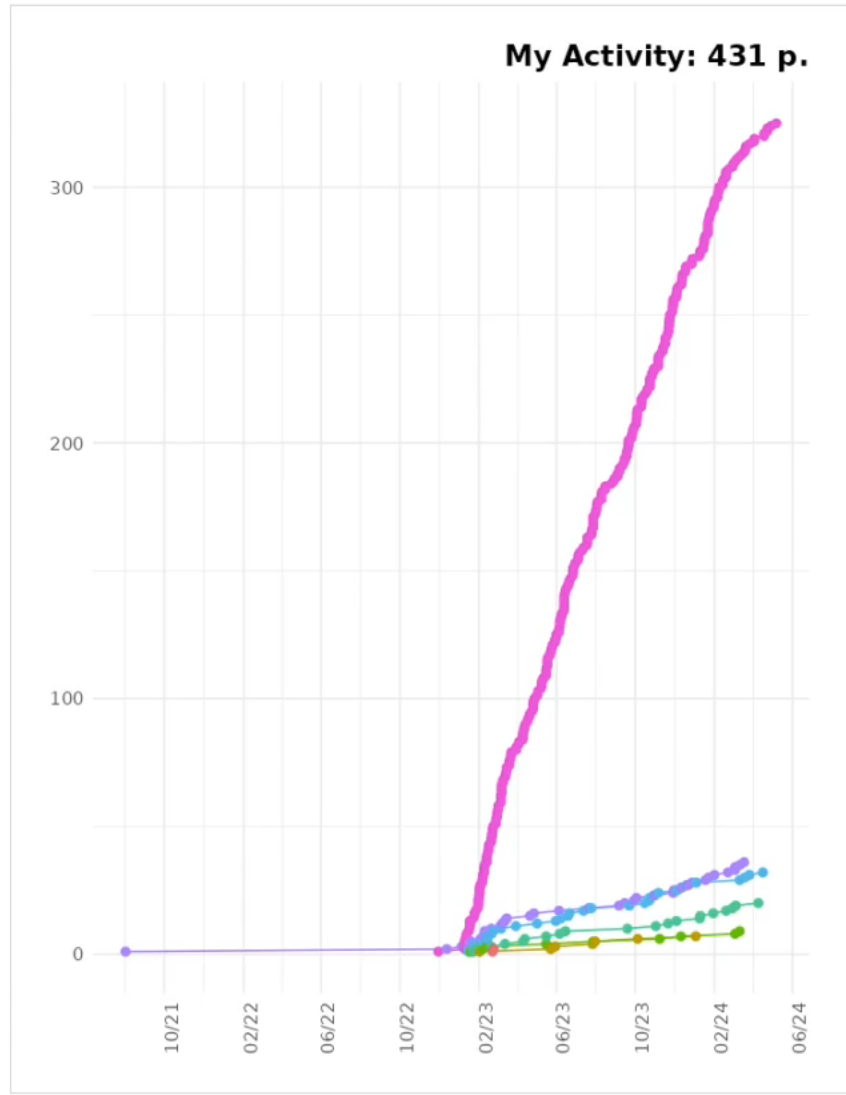
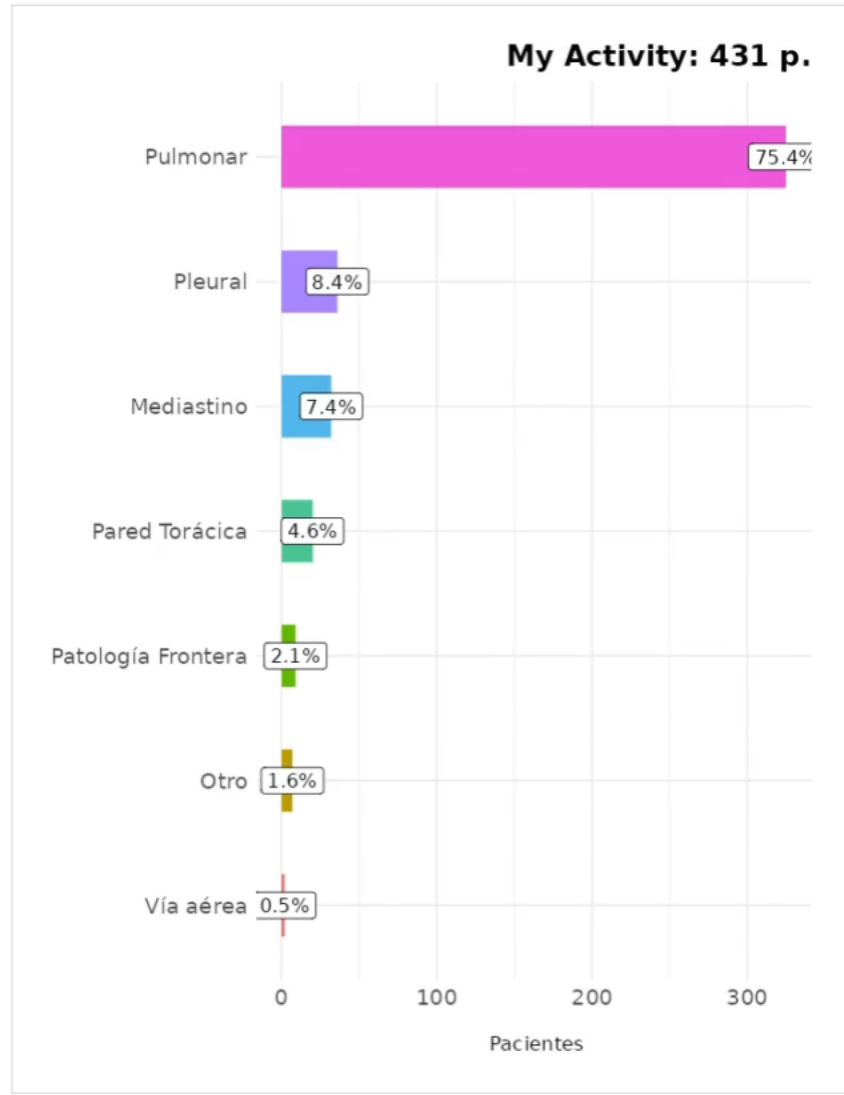
user

Code

demo

Global Filters

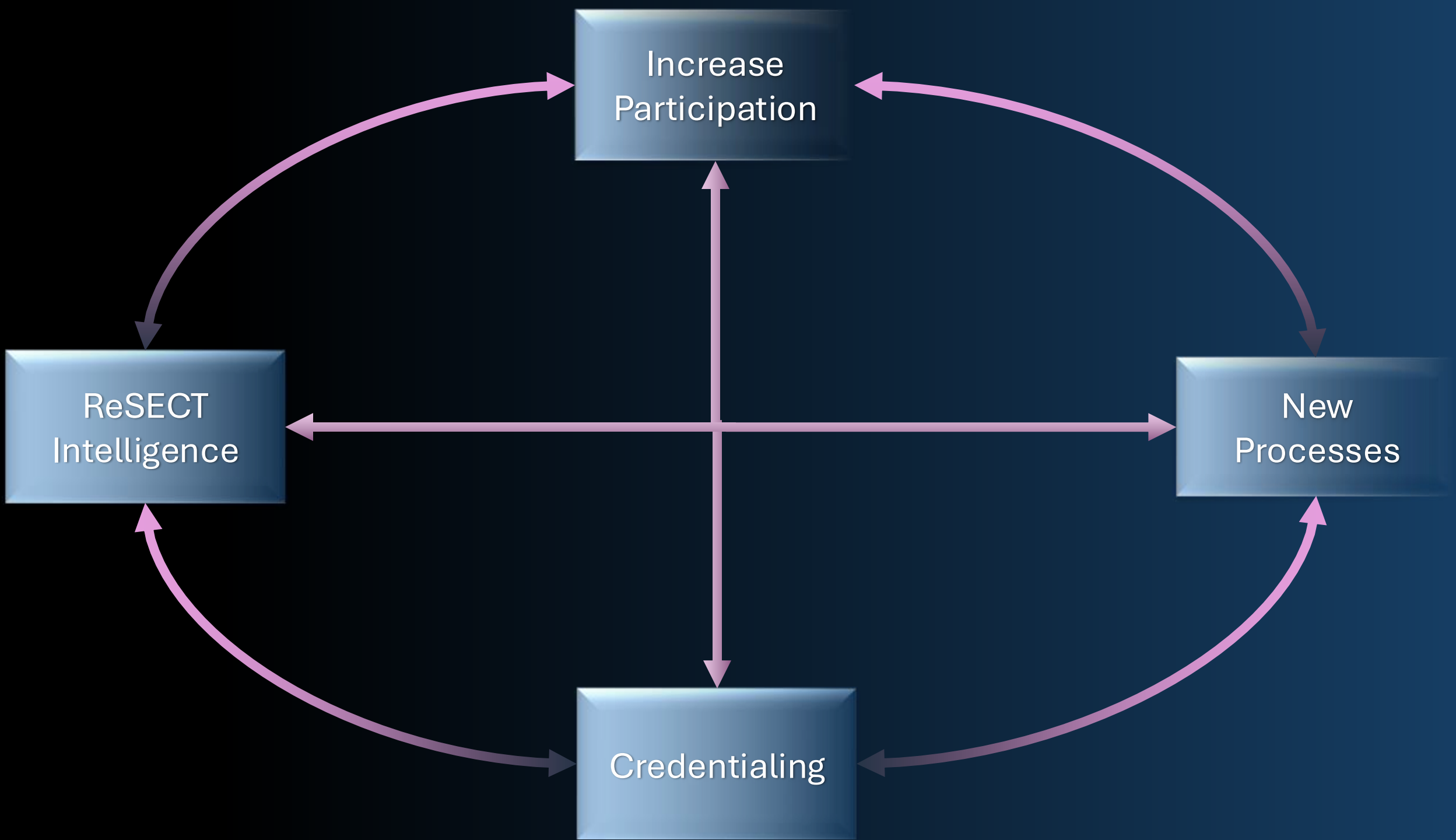
- Type
- Lung
- Lung-Groups
- Pleura
- Mediastinum
- Chest Wall
- Air Way
- Frontier

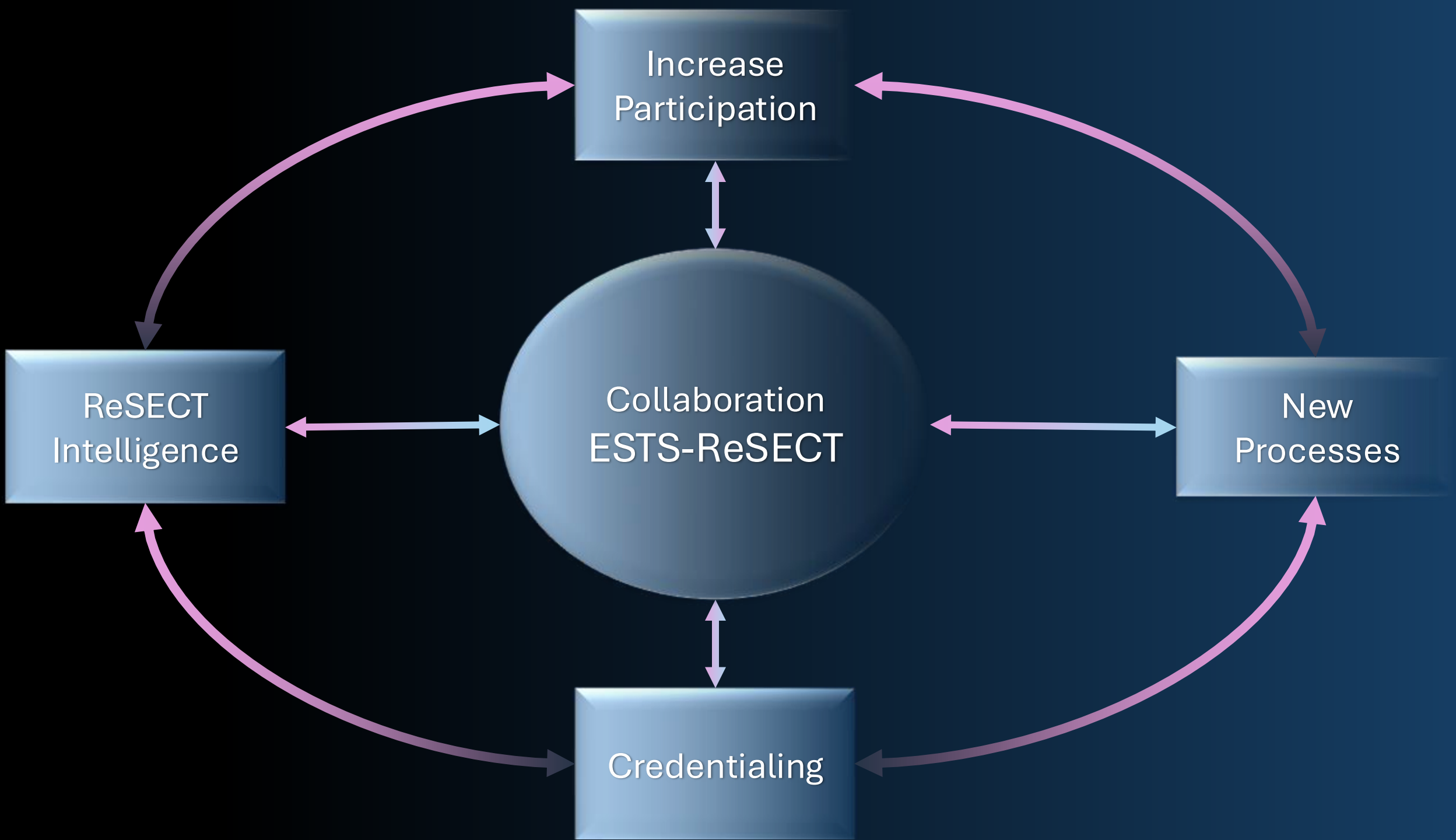


ReSECT Model

Data Science Project ::ReSECT

Future







Thank You!